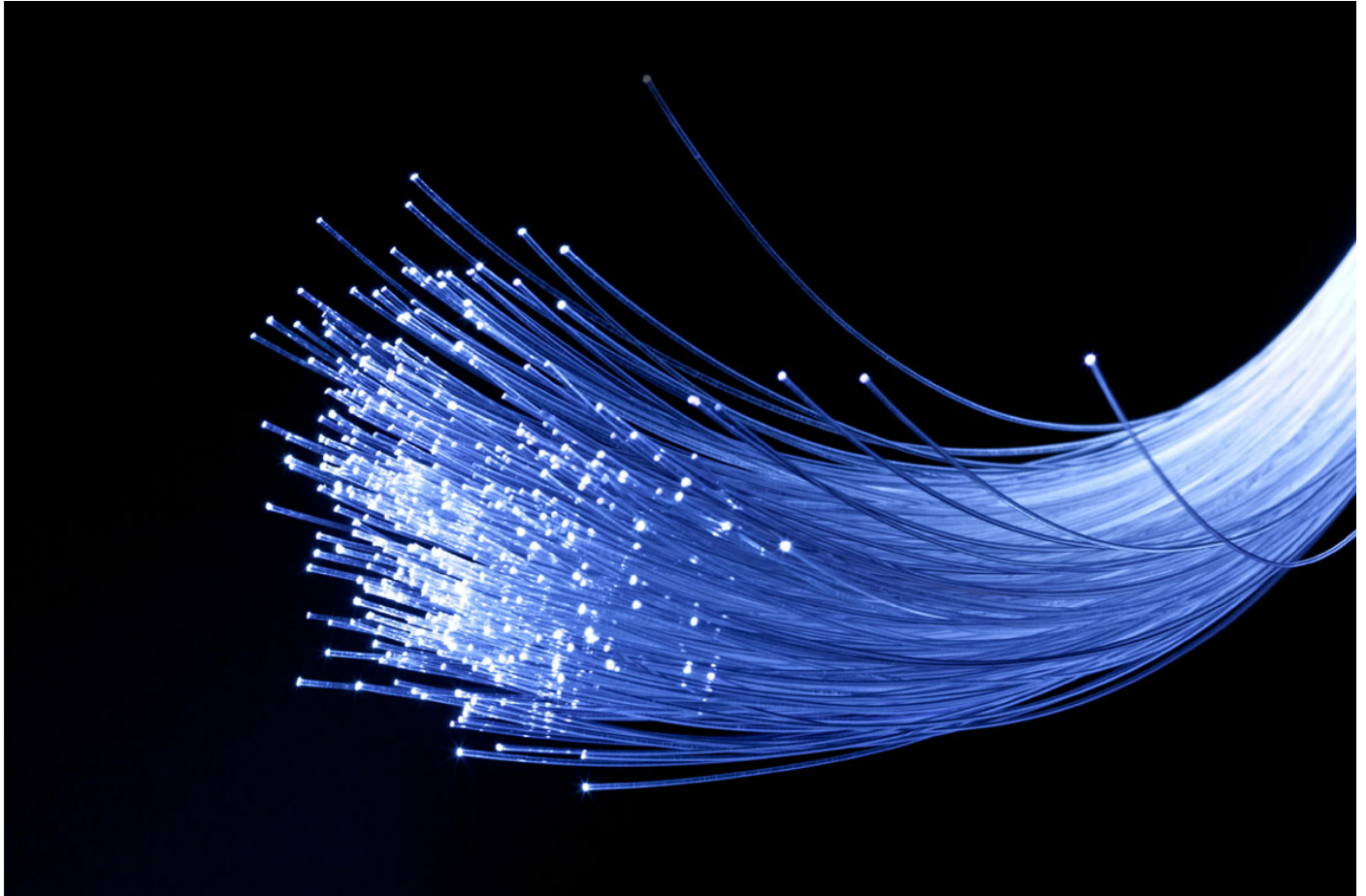




# All Tech All the Way? Think Again

 [westwoodgroup.com/insight/all-tech-all-the-way-think-again/](https://westwoodgroup.com/insight/all-tech-all-the-way-think-again/)



## Did You Know?

Since 1990, there have only been three instances where a sector weight in the S&P 500 has eclipsed 20 percent: Technology during the dotcom bubble in the early 2000s, Financials in 2007 and Technology again in 2018.

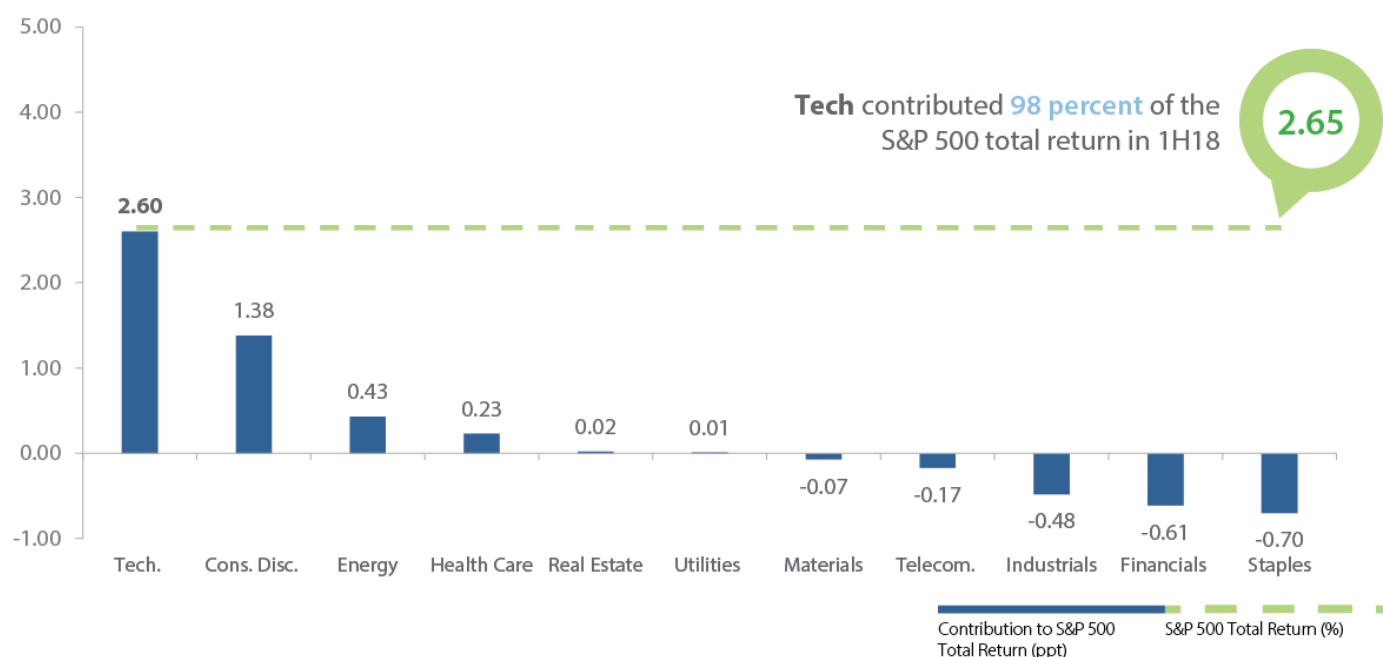


Although a major market correction does not appear imminent, the potential of a trade war, rising interest rates and corporate buybacks all signal that it may become increasingly difficult to generate returns and manage risk going forward. Investors should be cautious of the lack of market breadth and the ever-growing list of names in index products that point to the downside. The few names driving the index cannot be sustained.

Based on our historical analysis, when the market index becomes this concentrated in one sector, one of two scenarios plays out: either the market corrects or investors rotate dollars out of expensive sectors into cheaper ones. We believe that the latter aligns with our Capital Markets Outlook, and we expect to see a rotation in the market sooner rather than later.

## Here's What We're Seeing

Contribution of Sectors to the S&P 500's 1H18 Total Return



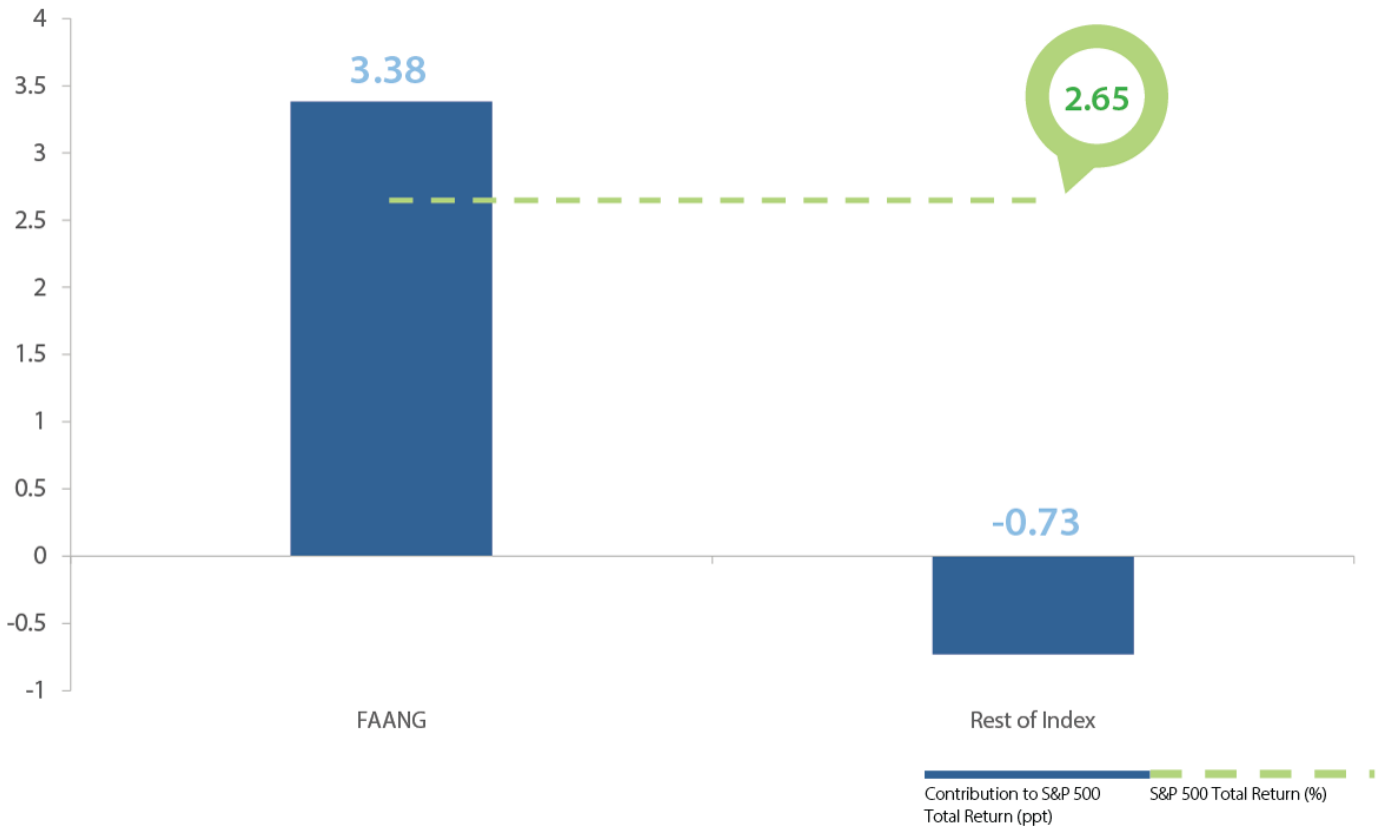
Source: BoA Merrill Lynch U.S. Equity and U.S. Quant Strategy

## FAANG stocks

FB AAPL AMZN NFLX GOOGL

Without FAANG stock contributions, index returns would have been negative.

FAANG Stocks' Contribution to the S&P 500 1H18 Total Return



Note: FAANG = FB, AAPL, AMZN, NFLX, GOOG/GOOGL

Source: BoA Merrill Lynch U.S. Equity and U.S. Quant Strategy

## Amid the dotcom meltdown, the S&P's technology sector weight dropped nearly 80 percent.

Later in the decade, the S&P's financials sector weight plunged 75 percent, prompting the Great Recession.

S&P Technology Sector % Weight in S&P 500



**-79.5%** Drawdown after the technology sector reached its peak weight.

Source: Strategas. Past performance is not indicative of future results.

S&P Financials Sector % Weight in S&P 500



**-76.5%** Drawdown after the financials sector reached its peak weight.

Source: Strategas. Past performance is not indicative of future results.

## Key Takeaways

---

This illustrates a known flaw with index funds, where surging stocks consistently have a bigger share of indexes that are market value weighted, such as the S&P 500. In general, passive investments do not actively trim exposure to these stocks, take profits or actively manage risk. Without adjusting sector concentration, investors are at a greater risk of substantial drawdowns without any downside protection. Conversely, underweighting overvalued sectors and overweighting undervalued sectors can potentially result in better risk-adjusted returns and is important to achieving client outcomes.

## Three Ways Westwood Can Help

---

1.  
Seeking Quality and Value  
We believe high-quality businesses that are operating well with undervalued earnings potential offer competitive risk-adjusted returns.
2.  
Risk Focused  
Combining quality and value offers superior risk-adjusted returns over the long term. We strive to balance potential upside gains with the importance of protecting capital by quantifying the absolute downside risk for every security throughout the process.
3.  
High Conviction  
We take pride in emphasizing high active share in our investment process to deliver “true active” management. We believe high-conviction investing creates opportunities for superior outcomes in terms of risk-adjusted returns.

The information contained herein represents the views of Westwood Wealth Management at a specific point in time and is based on information believed to be reliable. No representation or warranty is made concerning the accuracy or completeness of any data compiled herein. Any statements non-factual in nature constitute only current opinion, which is subject to change. Any statements concerning financial market trends are based on current market conditions, which will fluctuate. Past performance is not indicative of future results. All information provided herein is for informational purposes only and is not intended to be, and should not be interpreted as, an offer, solicitation, or recommendation to buy or sell or otherwise invest in any of the securities/sectors/countries that may be mentioned.

*The information contained herein represents the views of Westwood Holdings Group, Inc. at a specific point in time and is based on information believed to be reliable. No representation or warranty is made concerning the accuracy or completeness of any data compiled herein. Any statements non-factual in nature constitute only current opinion, which is subject to change. Any statements concerning financial market trends are based on current market conditions, which will fluctuate. Past performance is not indicative of future results. All information provided herein is for informational purposes only and is not intended to be, and should not be interpreted as, an offer, solicitation, or recommendation to buy or sell or otherwise invest in any of the securities/sectors/countries that may be mentioned.*